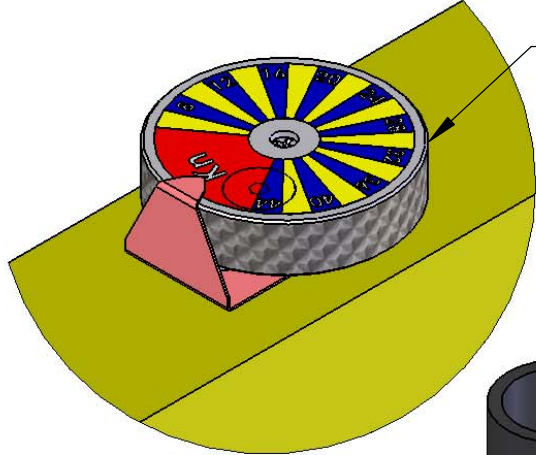


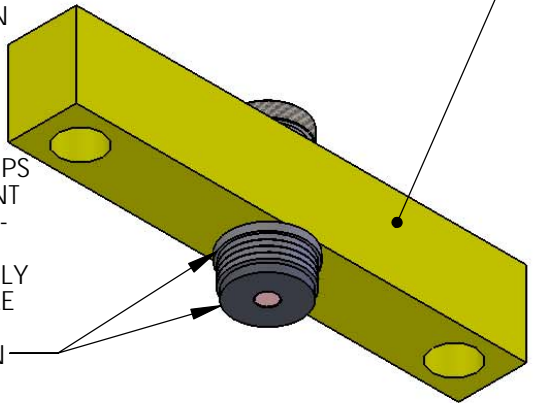
ALL STEEL PARTS ARE ZINC PLATED OR BLACK OXIDED OR CONSTRUCTED FROM STAINLESS STEEL TO HELP PREVENT CORROSION AND EXTEND LIFE.

ALL KLAMP HEAD ASSEMBLIES ARE PRE-ASSEMBLED TO STREAMLINE INSTALL TIME AND ELIMINATE PART COMPILATION ERRORS

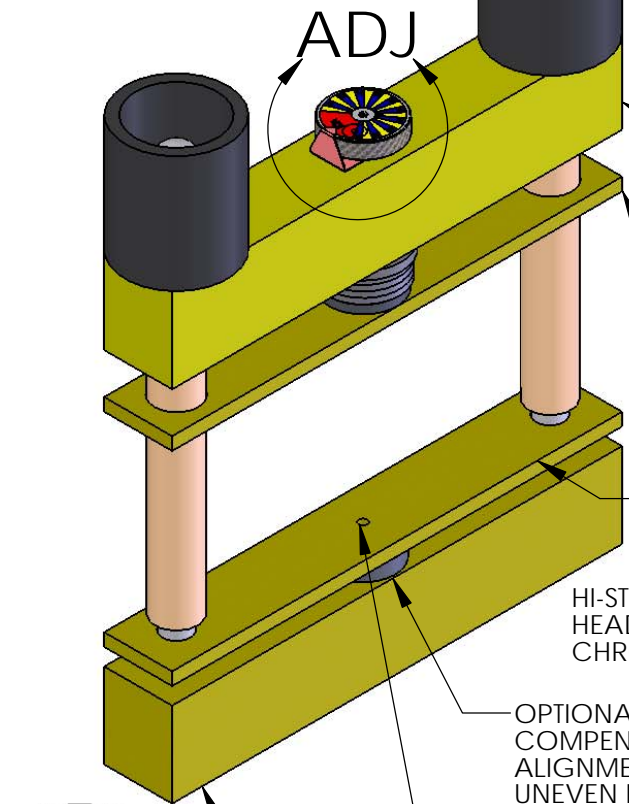


ADJUSTABLE MODELS WITH CALIBRATED PRECISION DIAL TO SET DESIRED KLAMP INDICATION FORCE

HARDENED BEARING SURFACES (ALL KLAMPS ABOVE 22kN) PREVENT SPRINGS FROM COM- PRESSING INTO BAR COMPONENTS (HIGHLY IMPORTANT IN MOBILE OR APPLICATIONS PRONE TO VIBRATION)



ADJUSTABLE MODEL



ADJ

HI-STRENGTH ALLOY HEAD BAR (ZINC CHROMATE FINISH)

PRESSER BAR (ZINC CHROMATE FINISH)

OPTIONAL BOTTOM PRESSER BAR

HI-STRENGTH ALLOY HEAD BAR (ZINC CHROMATE FINISH)

OPTIONAL 'ROCKER' HELPS COMPENSATE COMPONENT ALIGNMENT IN CASES OF UNEVEN ROD TIGHTENING

ALL 'CONTACT' BARS WITH LOCATION HOLE FOR ALIGNMENT PINS OR BALLS

HI-STRENGTH ALLOY BASE BAR (ZINC CHROMATE FINISH)

PRESSER BAR (ZINC CHROMATE FINISH)

OPTIONAL BOTTOM PRESSER BAR

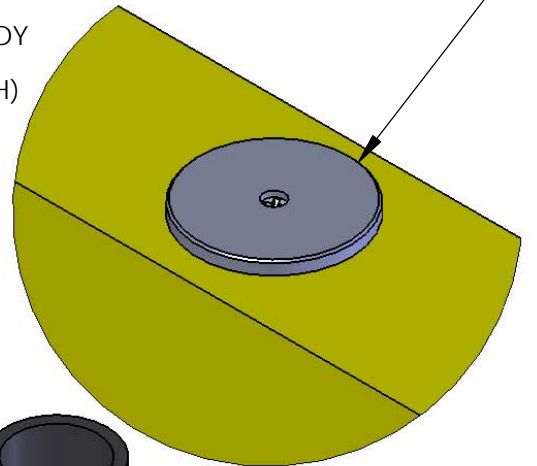
HI-STRENGTH ALLOY BASE BAR (ZINC CHROMATE FINISH)

ALL 'CONTACT' BARS WITH LOCATION HOLE FOR ALIGNMENT PINS OR BALLS

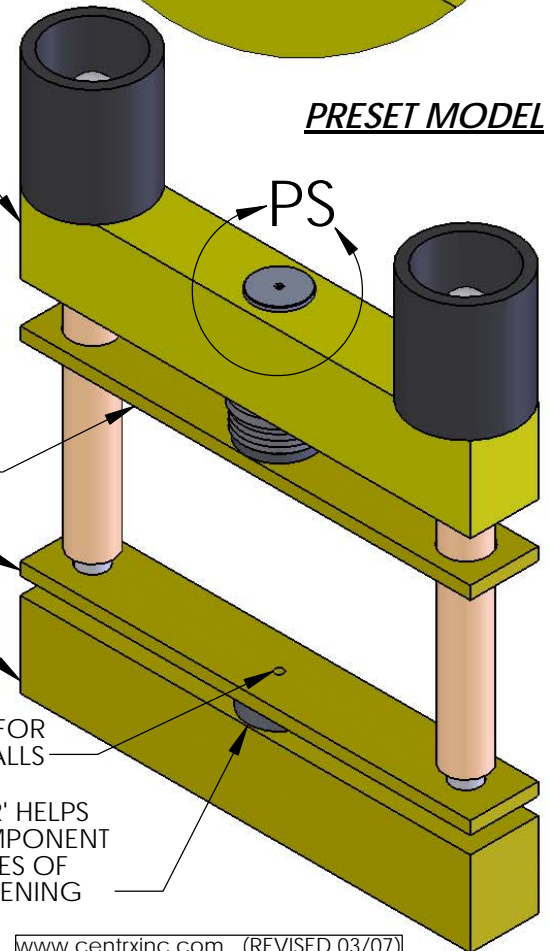
ALL CONNECTING ROD ASSEMBLIES ARE FACTORY PRE-ASSEMBLED TO STREAMLINE INSTALL TIME AND ELIMINATE PART COMPILATION ERRORS

ZINC PLATED RODS (HI-STRENGTH CLASS 8.8 THREAD)

PRESET MODELS WITH PRECISION 'SET-POINT' INDICATION PIN FOR EASILY ACHIEVING CORRECT AND ACCURATE INSTALLATION FORCE AT TIME OF INSTALLATION



PRESET MODEL



PS

OPTIONAL 'ROCKER' HELPS COMPENSATE COMPONENT ALIGNMENT IN CASES OF UNEVEN ROD TIGHTENING